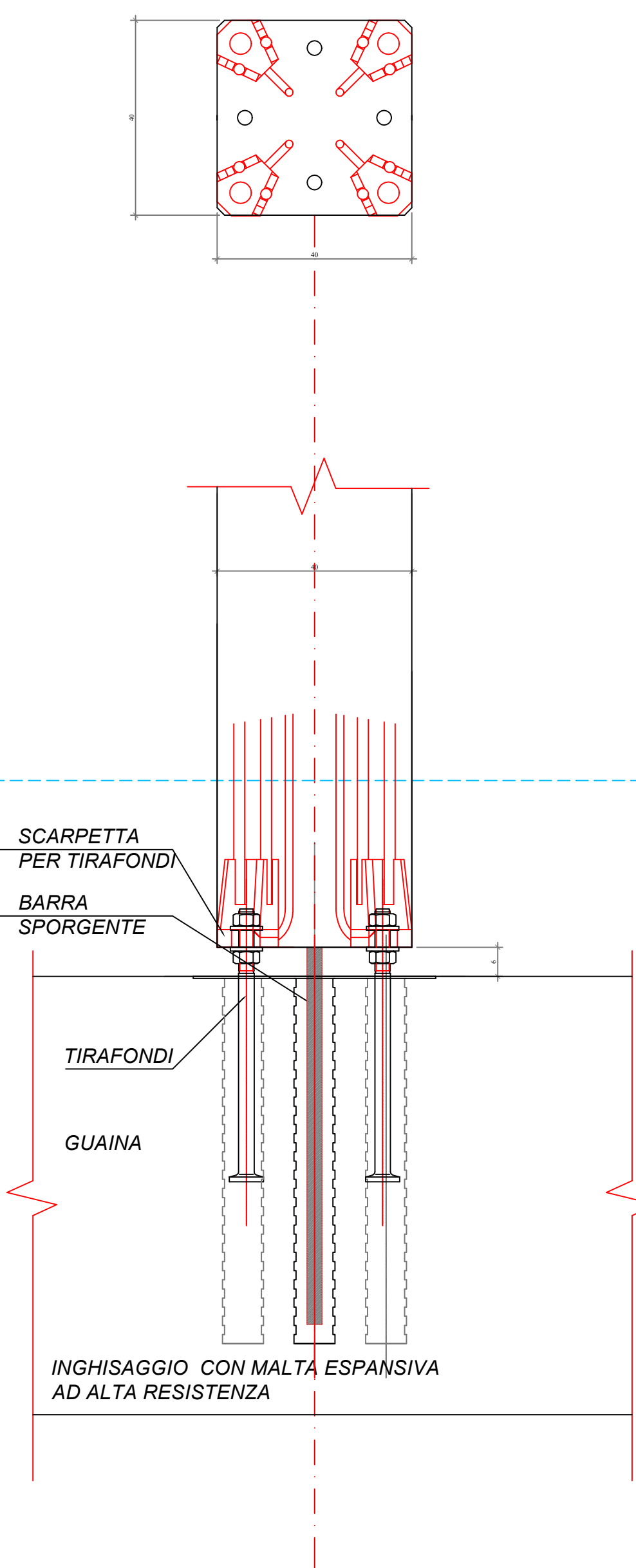


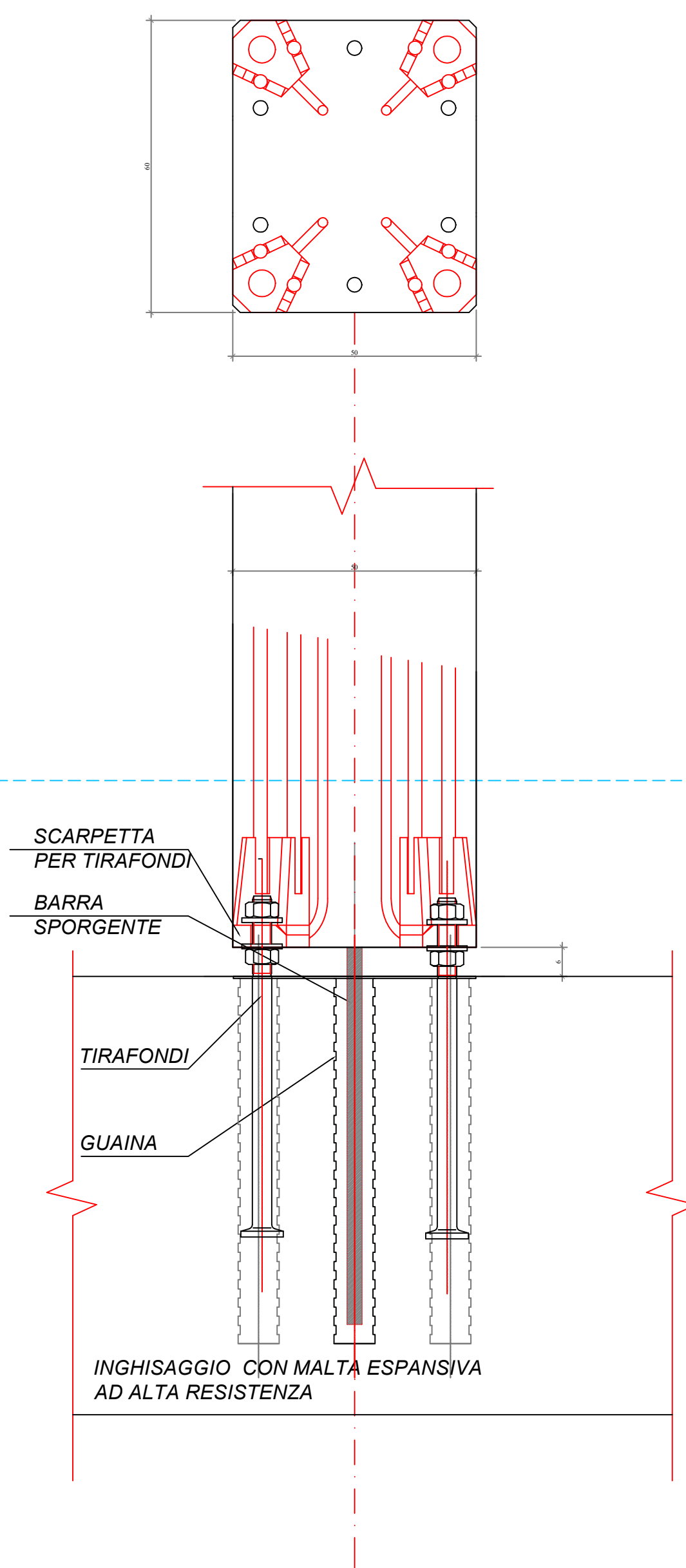
NODO P40x40 -PLINTO

Scala 1:10



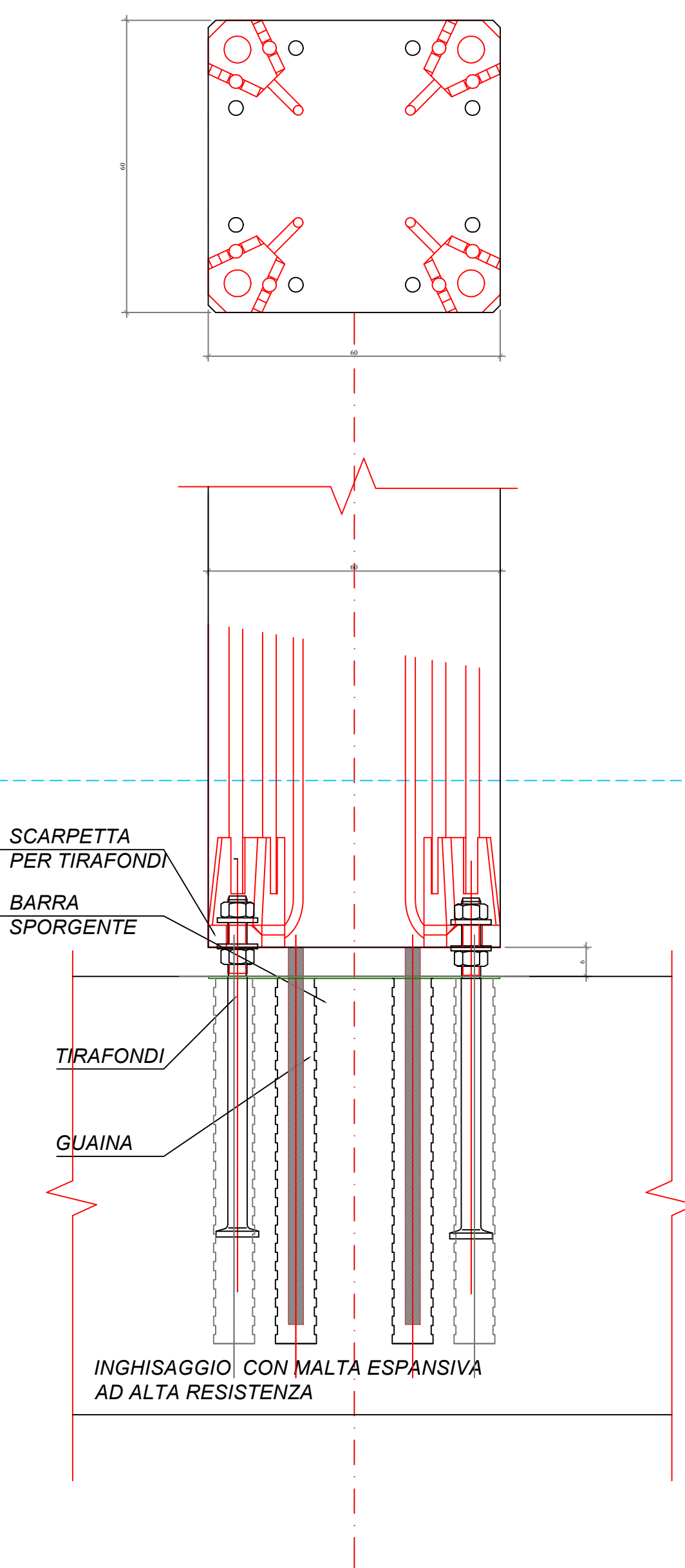
NODO P50x60 -PLINTO

Scala 1:10



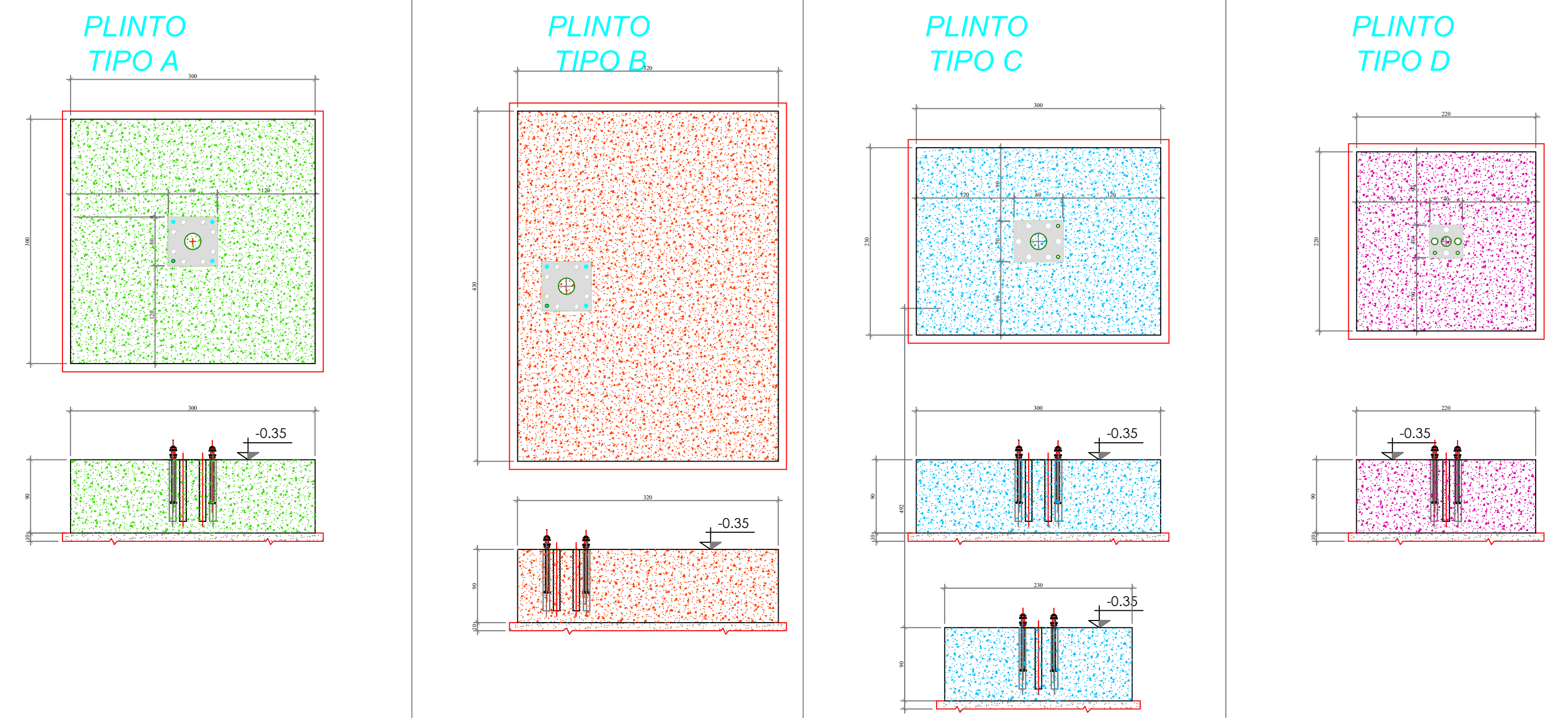
NODO P60x60 -PLINTO

Scala 1:10



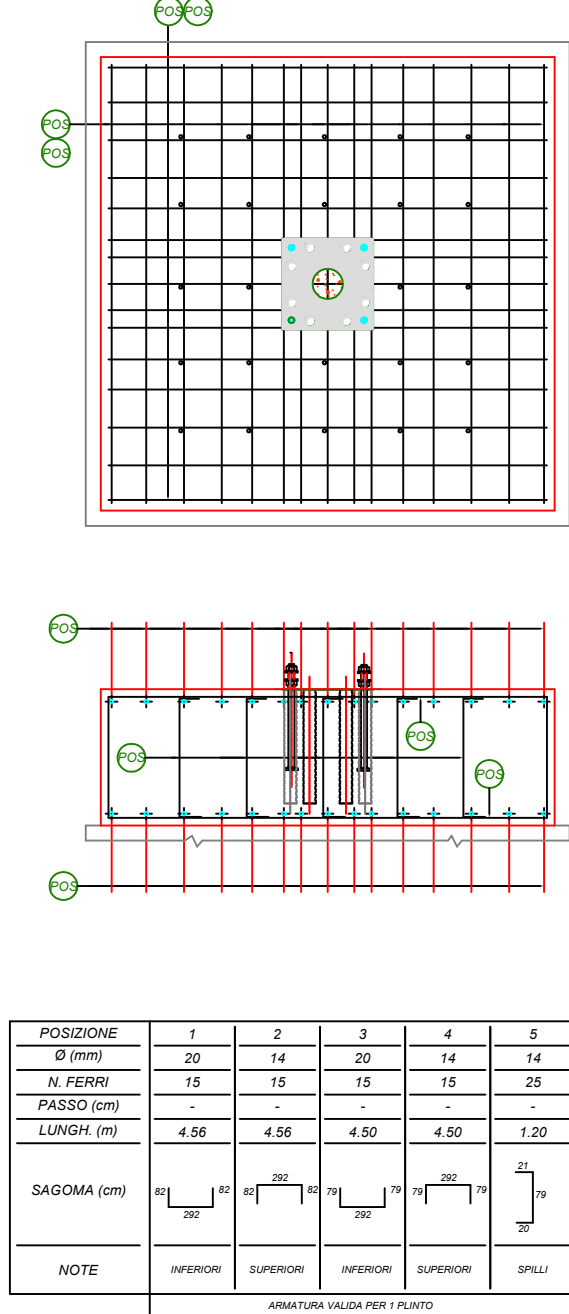
CARPENTERIA PLINTI

Scala 1:50



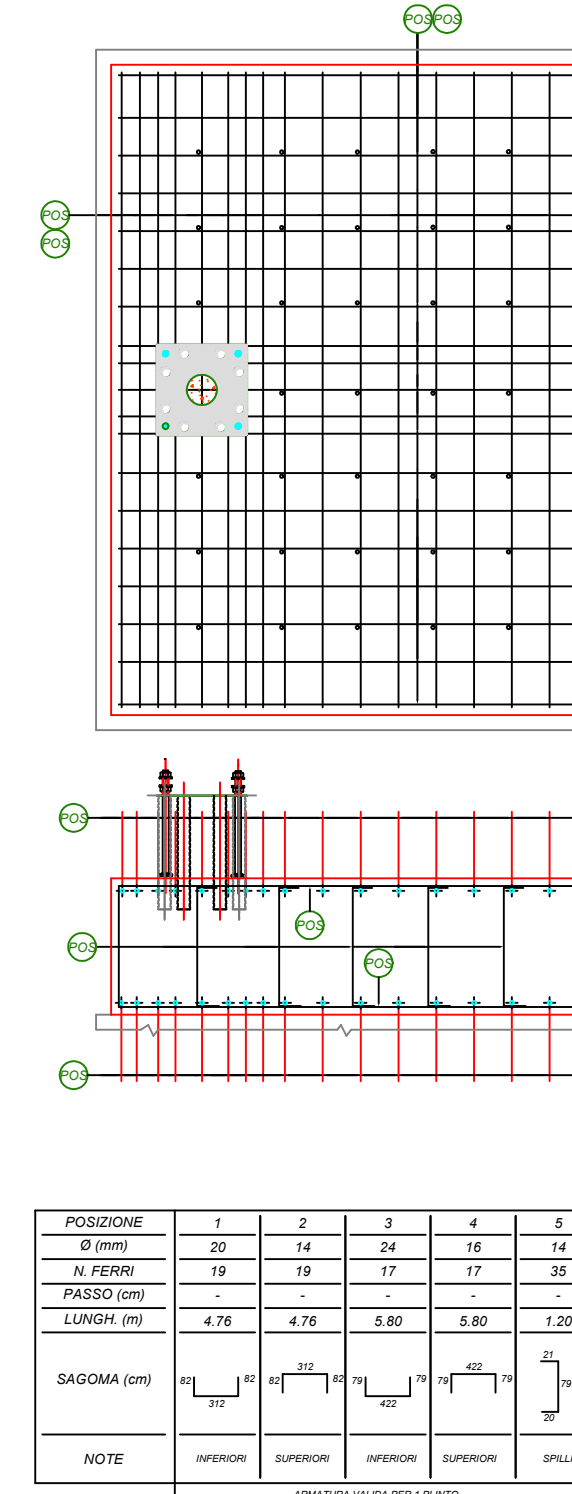
ARMATURA PLINTO TIPO A

Scala 1:25



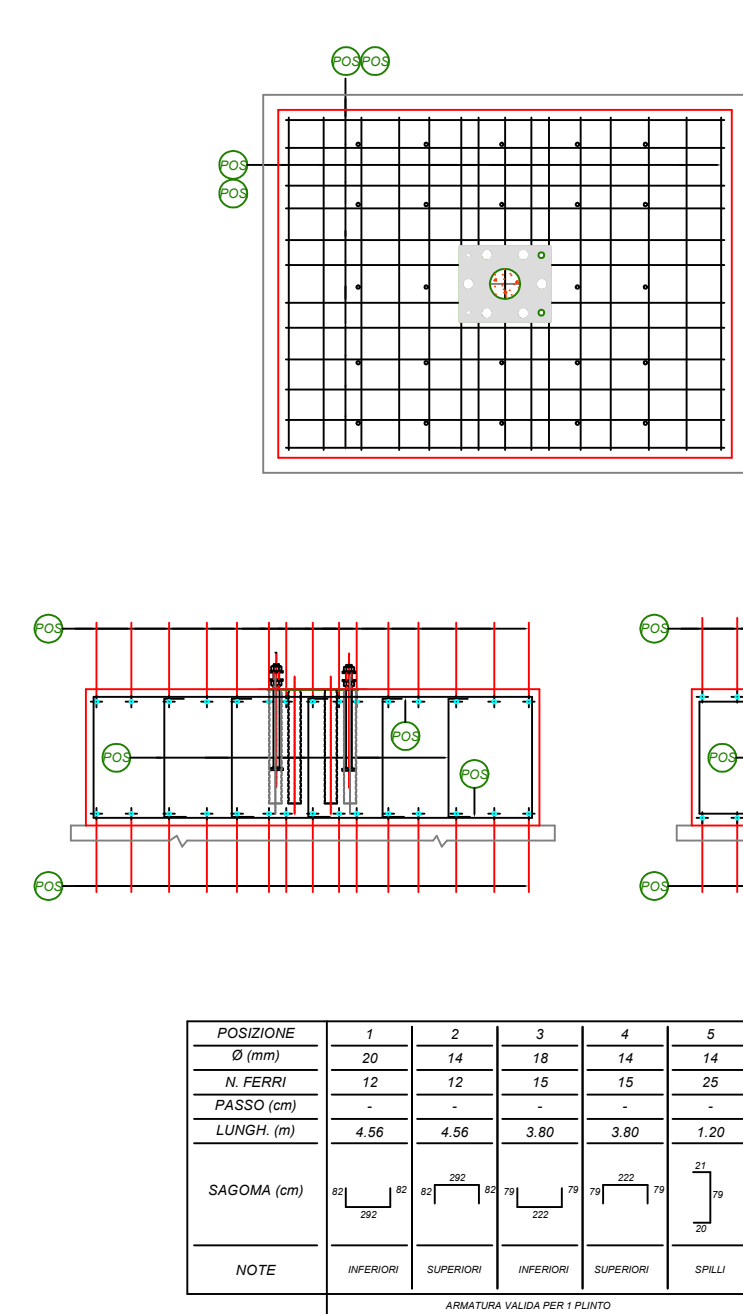
ARMATURA PLINTO TIPO B

Scala 1:25



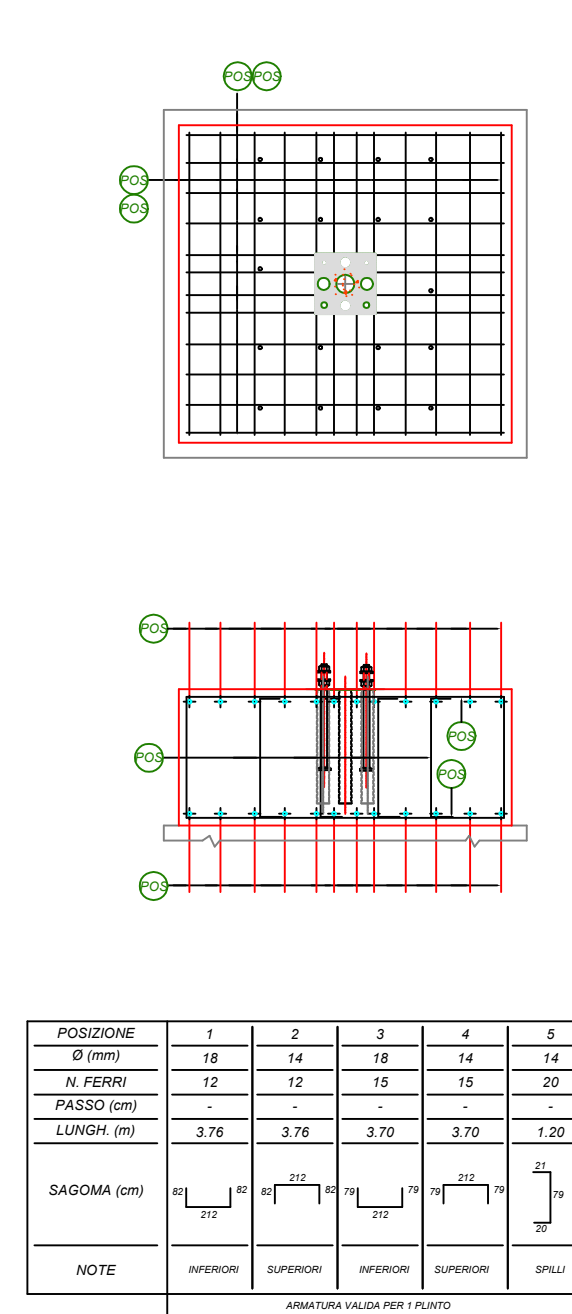
ARMATURA PLINTO TIPO C

Scala 1:25



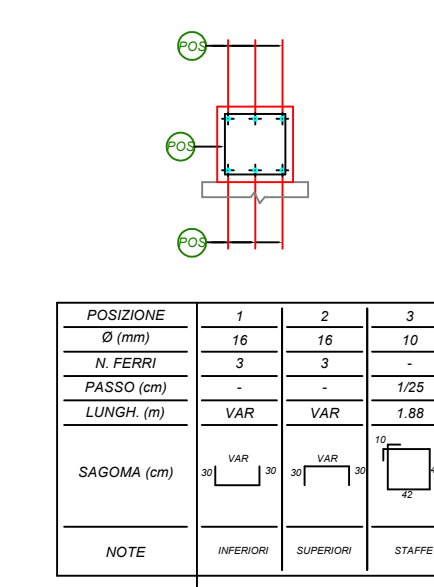
ARMATURA PLINTO TIPO D

Scala 1:25



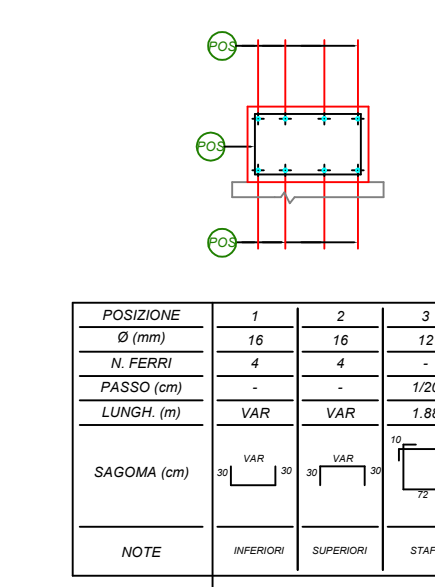
ARMATURA TRAVE 50x50

Scala 1:25



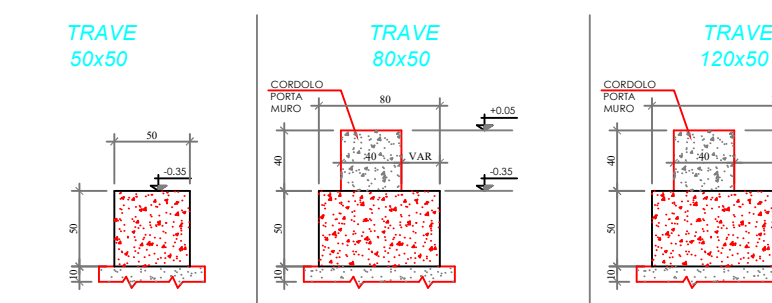
ARMATURA TRAVE 80x50

Scala 1:25



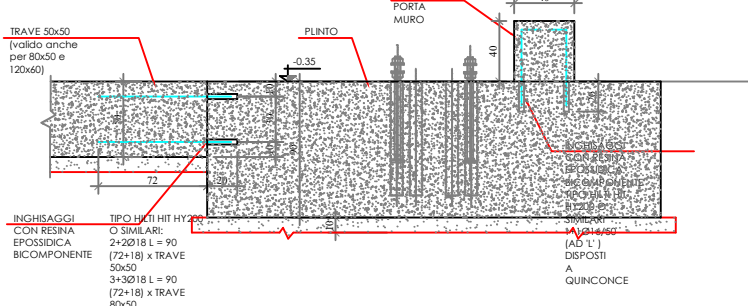
CARPENTERIA TRAVI

Scala 1:50



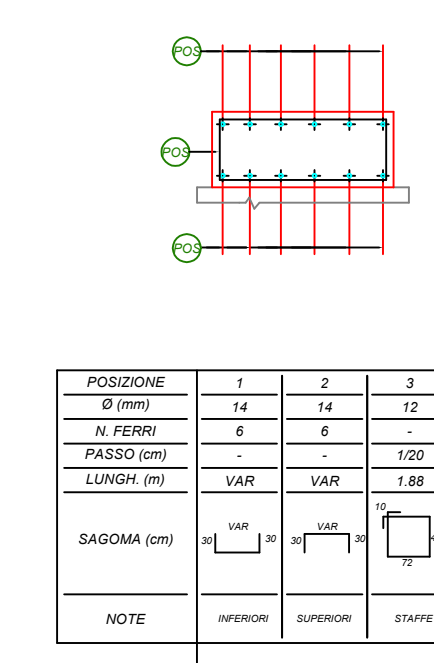
PARTICOLARE COSTRUTTIVO

Scala 1:20



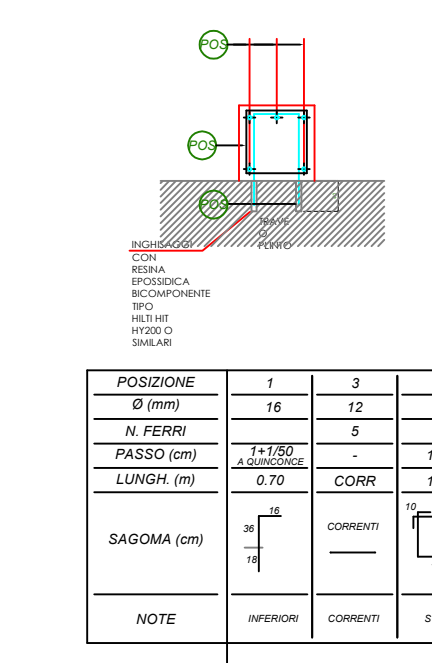
ARMATURA TRAVE 120x50

Scala 1:25



ARMATURA CORDOLO PORTA MURO

Scala 1:25



STUDIO TECNICO ASSOCIATO NOV.AC.

STUDIO INGEGNERIA STRUTTURALE
 ufficio 017294580
 cell. 334.6153270 ing. Accastelli - 335.7866651 ing. Novarese
 e-mail: studio.novac@gmail.com
 Via Cuneo 21, 12033 Moretta (CN)

Comune di Lagnasco Ex Bocciodromo comunale

committente
 Comune di Lagnasco
 Piazza Umberto I, 2
 12030 - Lagnasco (CN)

Via Luigi Dalmazzo
 12030 - Lagnasco (CN)

n° pratica interna
 06/2020

Progetto di Riqualificazione
 degli impianti sportivi comunali
 Bando "Sport missione comune 2019"
 PROGETTO STRUTTURALE

data
 Marzo 2021

TAVOLA S4.1B LOTTO 1 PARTICOLARI COSTRUTTIVI - scala varia

il progettista
 ing. Roberto ACCASTELLI

il committente

PLANIMETRIA GENERALE CHE INDIVIDUA I 3 CORPI DI FABBRICA

IN BLU = STRUTTURA IN C.A. PREFABBRICATA - EDIFICIO STRATEGICO
 IN NERO = STRUTTURA IN C.A. GETTATA IN OPERA - EDIFICIO STRATEGICO
 IN ROSSO = STRUTTURA ESISTENTE IN PREFABBRICATO - EDIFICIO NON STRATEGICO E NON RILEVANTE
 GIUNTO SISMICO TRA I TRE CORPI DI FABBRICA

